

# Rotary Multi-Branch Manifold



## Features

### ▶ Rotary design

Turn the funnels and add samples at same position and prevent cross-contamination.

### ▶ Save 60% space

Compared to conventional linear manifolds, SolarVac's rotary design saves 60% of space and fits better in laminar flow hoods.

### ▶ Easy tracking

Each funnel position is marked clearly with numbers, making tracking easy and effortless.

### ▶ Durable and autoclavable

The wetted parts of SolarVac manifold are made of SS316 and silicone which is durable and autoclavable.

### ▶ Individual control valve

Control feeds of each funnel individually.

### ▶ International certification

RoHS certification

### ▶ Two-Year Warranty

## Applications

- ▶ Microbiological test
- ▶ Suspended solid test
- ▶ Vacuum filtration

## Ordering Information

### 186600-01

SolarVac 600 - MS, 6 Places Rotary Manifold with No.8 Stopper Funnel Adaptor

### 186600-02

SolarVac 600 - MB, 6 Places Rotary Manifold with ROCKER SF Funnel Adaptor

### 180100-01

SF Stainless Steel Funnel, 100 mL

### 180100-03

SF Stainless Steel Funnel, 300 mL

### 180100-05

SF Stainless Steel Funnel, 500 mL

### 200300-01

MF 3, Magnetic Filter Holder, 300 mL

### 200300-01-P

MF 3 Pro, Magnetic Filter Holder, 300 mL

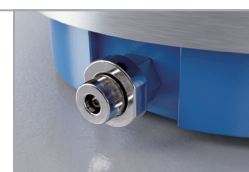
### 200500-01

MF 5, Magnetic Filter Holder, 500 mL

### 200500-01-P

MF 5 Pro, Magnetic Filter Holder, 500 mL

## SolarVac 600 - MS



Adjustable vent valve

## SolarVac 600 - MB



## Specification

Model	SolarVac 600 - MS	SolarVac 600 - MB
Number of branch	6	6
Filter diameter	Dependent to filter holders	47 mm
Funnel capacity	Optional	(optional) 100 mL / 300 mL / 500 mL
Hose barb	ID8	ID8
Net weight	8.6 Kg	8.4 Kg
Dimension (LxWxH)	ø 34 x 18 cm	ø 34 x 14 cm
Part	Material	Material
Body	SS304	SS304
Control valve	SS316	SS316
Adaptor	SS316	SS316
Membrane support	SS316	SS316
Hose barb / Vent valve	SS316	SS316
Knob	Aluminum	Aluminum
Tubing connection	Silicone	Silicone